



Phoenix (PMP01-LPiS)
Home Media Player

System Configuration Guide



Table of Contents

Introduction	3
Special Considerations	3
<i>Shipment Packaging</i>	3
<i>Location of the System</i>	3
<i>Display Compatibility</i>	3
<i>Technical Support</i>	3
Chapter 1 - Installing the Hardware	5
Items Needed for Installation	5
<i>Items Included with the System</i>	5
<i>Additional Items</i>	6
<i>Phoenix Front Panel Interfaces</i>	6
<i>Phoenix Back Panel Interfaces</i>	7
Hardware Setup	7
<i>Typical Cable Configuration</i>	8
<i>Cable Configuration for Older Displays and Receivers</i>	8
<i>On-board HD Audio Processing</i>	8
Chapter 2 – Configuring the System	9
Powering up the System	9
Navigating the Phoenix Media Player Interface.....	9
Configuring the User Interface	11
<i>Media Library Folders</i>	12
<i>Setting Up Monitored Media Folders</i>	12
Importing Media Content.....	14
<i>Importing Media Content using the Phoenix Media Player</i>	14
<i>Configuring Streaming Service</i>	18
Chapter 3 – Advanced System Settings	21
Configuring the Display.....	22
Configuring Audio	22
Setting the System Time	23
Network Settings	23
Reset Media Library	24
Advanced Control Configuration	24
System Firmware Update Tool	25
Remote Support	26

Introduction

This guide has been designed to help you get your system up and running quickly. It starts by describing each of the items needed for installation. Then it will walk you through each step of setting up the cabling for integration with your entertainment equipment (i.e.: display and sound system). You'll then be guided through configuring the system for use with your speaker system, display, and network.

Before you dive into the setup of the system, it's important to review some special considerations described in the following section.

Special Considerations

There are a few special considerations regarding the shipment packaging, where you locate your system, display compatibility, and technical support procedures.

Shipment Packaging

KEEP YOUR SHIPMENT PACKAGING. The Inteset Phoenix Media Player is a sensitive piece of equipment. Inteset has designed its shipment packaging to handle abuse during shipping. If for any reason you need to ship the system you can feel confident that the system will arrive at its destination intact.

Location of the System

The Phoenix Media Player should be located in an area where cool airflow is plentiful. Temperature around the system should not exceed 72 degrees Fahrenheit. **NEVER BLOCK VENTS.** Be sure there is plenty of room for airflow on all sides. Ideally, heat should be exhausted away from the back of the unit. It should not be placed on top of another component that produces heat. It is also recommended that it be located in a dry, dust free area. The Phoenix is made with only the highest quality components and is very resistant to less than ideal conditions; however, keeping the system in the environment described above will allow it to run for years and years.

Display Compatibility

The Phoenix Media Player is compatible with digital-based DVI or HDMI inputs on a display or receiver. Video and audio cables are not included with the system and must be purchased separately. If DVI is used, an optical S/PDIF audio cable is required as well. Refer to the subsequent *Chapter 1- Installing the Hardware* to determine your exact cable needs.

Technical Support

In the event you have a problem with your system, highly skilled, responsive, technical support is available. All support requests are tracked and need to be initiated through the Inteset Support Center Web page (see the www.inteset.com support section). You will need the serial number found on the bottom of your system, or in the front page of this guide when filling in the support form.

Every Phoenix system is equipped with remote access capability for support purposes. Once the Remote Access feature is enabled on the Phoenix (this procedure is described later), an Inteset support technician can remotely access the unit. This is ideal for assistance in configuration tasks, general help, or system troubleshooting. In addition, every Phoenix unit contains the Inteset Heartbeat Monitoring Service™. This service alerts Inteset of any issues the system is experiencing including fan troubles, overheating, power problems, low disk space and more. The Phoenix system will send alerts to Inteset who will then pass the information along to the installer for preemptive maintenance.

Chapter 1 - Installing the Hardware

In this chapter, you will be shown the items shipped with the Phoenix Media Player. You'll learn the various interfaces of the system's front and back panels. Then, you'll learn how to connect the system to your display or receiver.

Items Needed for Installation

This section describes all the items needed to install your system.

Items Included with the System

There are several items shipped with Phoenix (PMP01-LPiS) system. Enclosed items are described and shown in the image below.



Figure 1

1. Phoenix player
2. Phoenix player power transformer
3. System power cable
4. LPiS drive component (optional)
5. LPiS USB cables (optional)
6. Keyboard/mouse
7. Keyboard RF USB receiver
8. Keyboard/mouse batteries
9. Remote control
10. Remote control batteries

Additional Items

You may also need additional cables that are not included. Below is a list of those items.

1. DVI-I or HDMI video cable
2. Cat5 or Cat6 Ethernet patch cable
3. Optical S/PDIF cable (if using DVI video cable)
4. Power strip with signal filtering
5. UPS battery backup unit

To protect your system from power outages and fluctuations it is **HIGHLY RECOMMENDED** that you purchase a power conditioner and battery backup (250va or better). The most common reason for audio/video component failures is due to power outages and/or surges. A power conditioner and battery backup will protect against power fluctuations and supply better overall audio/video performance.

Phoenix Front Panel Interfaces

Below shows the various interfaces on the front panel of the Phoenix LPiS media player.

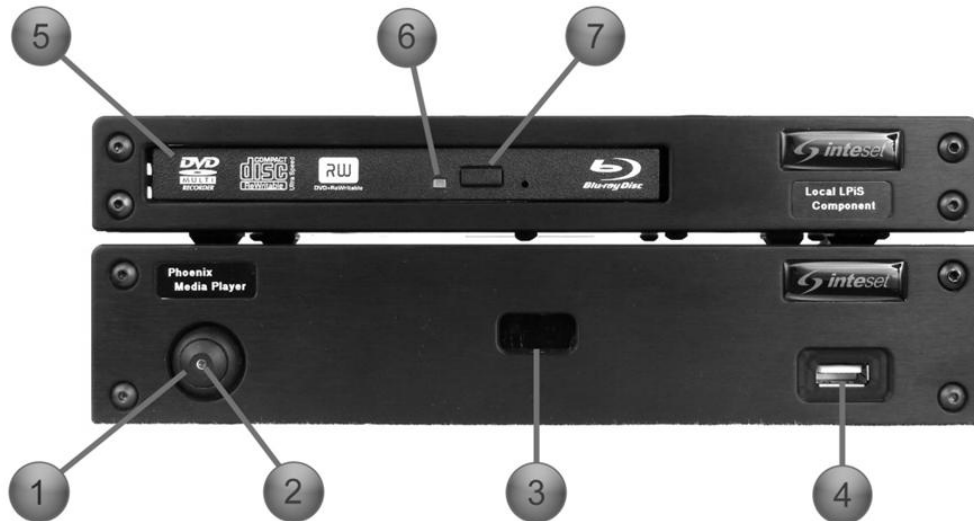


Figure 2

Front Panel Interface Descriptions

1. Phoenix power button
2. Phoenix power LED
3. IR receiver window
4. USB 2.0 (480Mbps) port
5. Optical drive read/write
6. Optical drive activity LED
7. Optical drive eject button

Phoenix Back Panel Interfaces

Below shows the various interfaces on the back panel of the Phoenix LPiS. Use the image and descriptions of each interface below when setting up the cabling in the following sections.

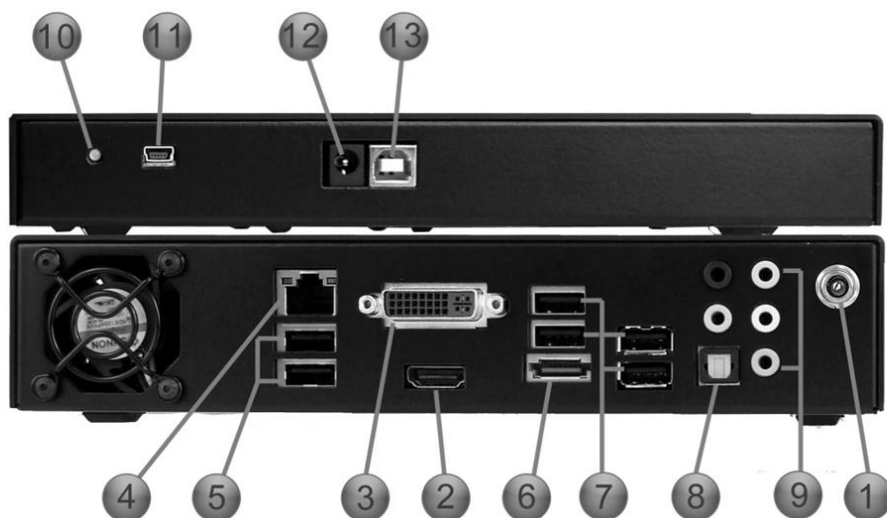


Figure 3

Back Panel Interface Descriptions

1. Phoenix 110/240 volt power output jack
2. HDMI video output
3. DVI-I video output
4. 100/1000 Ethernet port
5. 2 USB 2.0 (480Mbps) ports – for use with LPiS component
6. eSata external drive input (for future use)
7. 4 USB 2.0 (480Mbps) ports – for external USB devices
8. S/PDIF audio output (optical) – for use in conjunction with DVI-I video
9. Analog audio output (deactivated by default)
10. LPiS storage drive activity LED
11. LPiS storage USB (mini-b) port
12. LPiS optical drive auxiliary power (unused)
13. LPiS optical drive USB (type-b) port

Hardware Setup

The hardware setup involves connecting various cables in the back of the Phoenix system and then to your receiver and/or display device. Before you begin installing the various cables, you must determine the type of setup you have. There are a couple of questions you need to answer before proceeding:

1. Are you connecting the Inteset LPiS component (external drive unit) to the Phoenix?
2. Does your display device or receiver support a DVI or HDMI interface?
3. Are you using a separate receiver for sound processing or will the Phoenix process sound and be connected directly to an amplifier?

Once you answer the questions above, you can begin connecting the various cables described in the previous chapter. Refer to the images and steps in the following sections.

Typical Cable Configuration

The connection instructions below apply to the most typical installation which includes:

1. Connecting the Inteset LPiS Component (external drive unit) to the Phoenix player
2. Connecting the Phoenix player to an HDMI video/audio interface on your display or receiver unit.

Follow the steps below to connect the Phoenix Media Player to your display and/or receiver.



Figure 4

- Step 1.** Connect the LPiS USB cable (Figure 1 – item 5) to the LPiS storage USB (mini-b) port (Figure 4 – item 1). Connect the opposite end to the Phoenix USB port (Figure 4 – item 2)
- Step 2.** Connect the other LPiS USB cable (Figure 1 – item 5) to the LPiS storage USB (type-b) port (Figure 4 – item 3). Connect the opposite end to the Phoenix USB port (Figure 4 – item 4)
- Step 3.** Connect the Ethernet cable to the Ethernet port on the Phoenix (Figure 4 – item 5), then to the Ethernet receptacle in the wall.
- Step 4.** Connect the HDMI cable to the HDMI port on the Phoenix (Figure 4 – item 6), then to the HDMI interface on the display or receiver.
- Step 5.** Connect the server system power cable (Figure 1 - item 2) to the power output jack of the Phoenix (Figure 4 – item 8), then plug the other end into a UPS (highly recommended), power strip filter, surge protector, or standard power outlet (not recommend.)

Cable Configuration for Older Displays and Receivers

If your display and/or receiver does not support HDMI video/audio, use a DVI-I cable for the video connection and an optical S/PDIF cable for the audio connection (see Figure 3 – items 3 and 8).

On-board HD Audio Processing

The Phoenix Media Player has the capability of processing the latest surround sound technologies including Dolby TrueHD[®] and DTS-HD Master Audio[®] (HD 7.1 channel surround). This means that you will not need to use a separate receiver to process these sound technologies. The Phoenix player can output this type of audio through the analog audio outputs (Figure 3 – item 9) direct to an amplifier. These outputs by default are disabled. Contact Inteset technical support to activate these ports and assist you with the setup.

Chapter 2 – Configuring the System

Now that the hardware is set up and the cables have been connected, it's time to turn on and configure your system. In the following sections, you will learn how to:

- Power on the system
- Configure the system for your display, speaker, and network
- Add media content

Before proceeding, you will need to select the input source of your display that matches the physical connection to the Phoenix (i.e. DVI or HDMI). Consult your display manual to determine how to select the appropriate input source.

Powering up the System

Turn on the Phoenix player by pressing the power button on the front left side of the system. A blue LED will shine on the button indicating that the power is on.



It will take up to 30 seconds for the system to fully initialize and connect to your network. Note that you must have a DHCP capable network for the Phoenix to be able to connect without modifying the systems network setting. If you do not have a DHCP capable network, or want to assign a static IP address to the system, see *Chapter 3 - Advanced System Configuration, Network Settings* section.

Now that the system is powered on, you can proceed to the next section, *Navigating the Phoenix Media Player Interface*.

Navigating the Phoenix Media Player Interface

There are 2 devices included with the system that allow you to navigate the Phoenix interface: the backlit IR remote control (Figure 1 – item 9), or RF keyboard and mouse (Figure 1 – item 6). The recommended method of navigation is to use the remote control.

Almost all features can be accessed using just 7 buttons – the 4 *Arrow* buttons and the *OK* button at the center of the remote. Two of the most used buttons on the remote control are the *Inteset Button* found in the center of the remote, and the *Back* button. Pressing the Inteset button will always return you to the Phoenix player's Start screen, while the Back button will always return you to the previous screen.



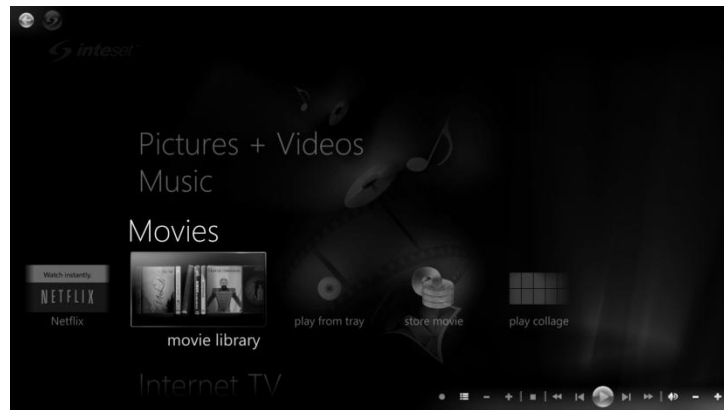
Other keys on the top of the remote, such as the music, pictures, video buttons, etc, will bring you directly to their respective Phoenix entertainment functions. The transport controls below the direct buttons are used for movie, music, video, and picture playback and include the Play, Stop, Pause, Fast Forward, Rewind, Skip, and Replay buttons. The special exclamation point (!) button can be used to display “Detail” information based on which screen you are viewing. Press this button when you are in the Movie, Music, Pictures, or Video search screens to view the available options it reveals for these features.

If you wish to use the keyboard and mouse as your device to navigate, the shortcut key guide below will help you optimize your navigation experience.

General Phoenix Media Player Keyboard Shortcuts	
Move up	UP ARROW
Move down	DOWN ARROW
Move left	LEFT ARROW
Move right	RIGHT ARROW
Select	ENTER or SPACEBAR
Jump back one screen at a time	PAGE UP
Jump ahead one screen at a time	PAGE DOWN
Go back to the previous screen or backspace a single character in Search	BACKSPACE
More Info (Details)	CTRL+D
Start Menu Shortcuts	
Music	CTRL+M
Videos	CTRL+E
Pictures	CTRL+I
Movie Library (<i>DVD Menu</i> if movie is playing)	CTRL+SHIFT+M
Transport controls	
Pause	CTRL+P
Play	CTRL+SHIFT+P
Stop	CTRL+SHIFT+S
Skip Chapter	CTRL+F
Replay Chapter	CTRL+B
Fast Forward	CTRL+SHIFT+F

Rewind	CTRL+SHIFT+B
Mute	F8
Volume Down	F9
Volume Up	F10

When you move your mouse (located on the keyboard) or select a key on your keyboard, the following Navigation Controls will appear within the interface. The Inteset button in the top left corner will always bring you to the Start Menu from any location within the interface. The left pointing arrow will always bring you to the previous screen.

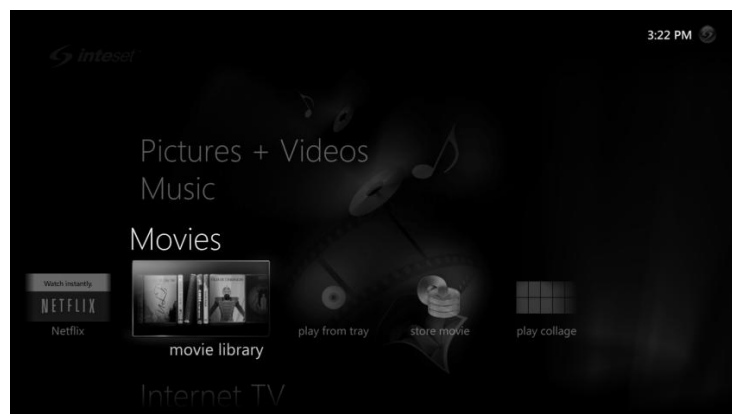


For transport controls, you can find them at the bottom right corner of the screen. These buttons will allow you to Play, Stop, Pause, Fast Forward, Rewind, Skip, Replay, Mute, and Volume adjustment for any currently playing media.

Configuring the User Interface

In this section, you will learn the steps to configure the Phoenix Media Player user interface. This entails setting up monitored content locations of your movies, music, pictures and videos. You will learn how to import content. In addition, it describes the steps to set up your Netflix and Hulu premium streaming service accounts.

Once the Phoenix is fully started, you will see the following screen and are ready to configure the system.



Media Library Folders

Before setting up your monitored folders, it is worthwhile to explain the predefined media content folders found on Inteset storage devices such as the LPiS drive component and TeraRAID NAS servers. If you've purchased one of these devices, they contain the locations you'll be storing your media content.

Media content is stored in an area that Inteset refers to as the *media library*. The media library contains several folders each responsible for storing specific types of media content. The media content is added to these folders via importing and copying methods described later in this section. Media content within these folders is available for playback by the Phoenix player. There are four major media type categories found within the media library. Each is listed below.

Movies: This folder contains DVD and Blu-ray movie folders and files.

Pictures: This folder contains all of your digital images or other image files. File types include BMP, JPG, PNG, TIF, and GIF files. These are the most common file formats produced by digital cameras.

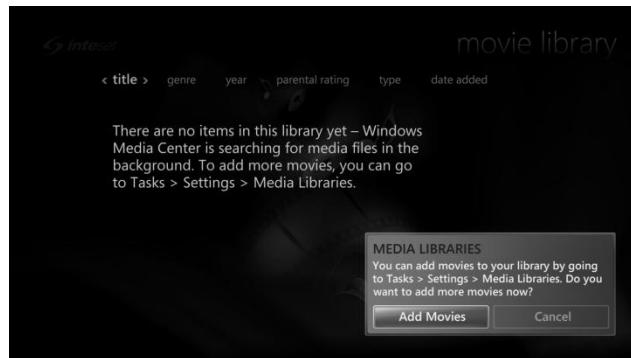
Music: This folder contains music and playlist files that have been copied (ripped) to the media library via the Phoenix player or copied by a computer on the network. File types included in these folders may include MP3, WMA, WAV, AAC, AC3, MP4, M4A files.

Videos: This folder contains all of your digital video files. File types include AVCHD, AVCHD Lite, MPEG-4, MPEG-2, MPEG, MP4, 3GP, WMV, and AVI files. These are the most common file formats produced by digital video cameras.

Setting Up Monitored Media Folders

In order to play back content stored on your storage device, you will need to define where these content folders exist. Defining these locations is a simple one-time routine that you can perform with your remote control.

- Step 1.** Using the remote control, navigate to the Movies/Movie Library option in the Start menu, then select the "OK" button. You will be introduced to the following message.



NOTE: This message will only appear the first time you enter this screen.

- Step 2.** Choose the "Add Movies" button to open the "Manage Library" wizard screen as shown below.



NOTE: The "Recorded TV" library shown in the list is not applicable.

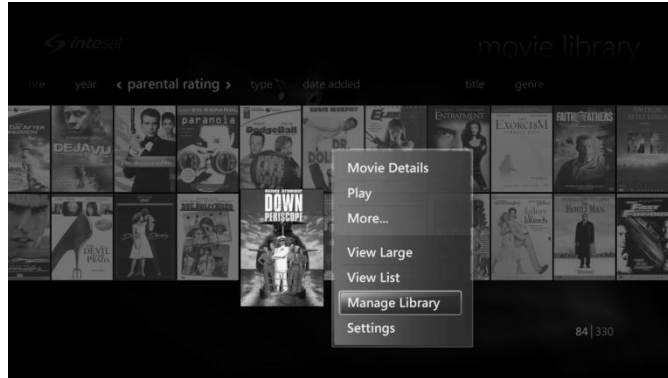
- Step 3.** From here, choose the library for which you want to monitor (ie: *Movies*), then select the "Next" button. A screen similar to the one below will be displayed.



- Step 4.** If your content is located on an Inteset LPiS drive device, choose the "On this computer..." option. If it is located on an Inteset TeraRAID Storage server or other network location, choose the "On another computer" option. Follow the simple on screen instructions from this point forward.

Follow the above steps for each of the other media libraries including Music, Pictures, and Videos. You can access these media libraries from the Phoenix main menu.

If you need to adjust the libraries in the future, you can access the “Manage Library” wizards simply by going into the movies, music, pictures, or videos library screen, then choose the *Details* button on the remote (looks like an exclamation point), or press the CTRL+D keys on your keyboard. A dialog will appear with a list of options as shown below.



Choose the “Manage Library” option to start the wizard.

Importing Media Content

A convenient feature of the Phoenix Media Player is its ability to import your personal media content into media library locations. This means you can store and access all of your pictures, music, movies, and home videos from a single, user friendly interface.

There are a few methods of importing media content into your media library depending on the type of media being imported. One way is to simply connect your media device or media disc (ie: portable media player, camera, USB flash drive, digital video camera, etc) into the player via the front USB port, or by placing a media disc (ie: CD, DVD, or Blu-ray) into the optional optical drive unit (LPiS). The Phoenix player will prompt you appropriately on the next steps based on the media type found on the device or disc.

The table below lists the supported media formats.

Media Type	Format	File Types
Video	Movie	Blu-ray (MTS), Blu-ray 3D™, BD Live™, DVD (VOB)
	Home Video	AVCHD, AVCHD Lite, MPEG-4, MPEG-2, MPEG, MP4, 3GP, WMV, AVI
	Pictures	PNG, BMP, GIF, JPG, TIF
Audio	Music	MP3, WMA, WAV, AAC, AC3, MP4, M4A

Note: Playback of media that is protected with DRM (Digital Rights Management) is not supported. If playback of this type of content is attempted, you will receive playback error messages and the content will not play.

Importing Media Content using the Phoenix Media Player

You can add media content to the Phoenix player using a supported external device. There are several types of devices that can be used for adding content. These consist of portable, USB attached hard drive and flash drive devices, portable media player devices, and optical media (CD, DVD, Blu-ray discs). The Phoenix player will scan the device or disc for supported media file types and display applicable import and playback options based on what it finds. Each access method for these devices is described briefly in the subsequent sections.

Importing Content Using an External Hard Drive, Flash Drive or other Media Capture Device

Devices that support a standard hard drive format compatible with Windows (ie: digital cameras, USB flash drives, digital video cameras, external USB drives, etc) are all sources for content import. The device must supply a USB cable that is compatible with a computer USB connection type. If your device has these properties, it's likely the Phoenix player will be able to import the media files contained on the device.

Connect the device to the Phoenix player's front USB port. In a few seconds, if the device is supported and depending on the content found on it, you will see a message dialog appear similar to the one below.



From this point, select an option displayed and follow the instructions for that option. A screen similar to the following will be displayed.



Enter an appropriate folder name for the media and select *Import*. A new folder (or folders depending on the content type) will appear in your media library containing the pictures, videos, and music that have been transferred from the device.

Importing Music Content from a Music CD

To build your music library, you can copy (rip) your CD collection to the media library. You can expect copy times from 3 to 7 minutes per CD depending on the amount of tracks and their length. Be sure the system is connected to the Internet otherwise the CD cover art will not be attainable.

To copy a music CD, insert it into the optical drive (LPiS component). The Phoenix will play the CD and display the Now Playing screen similar to the one shown below.



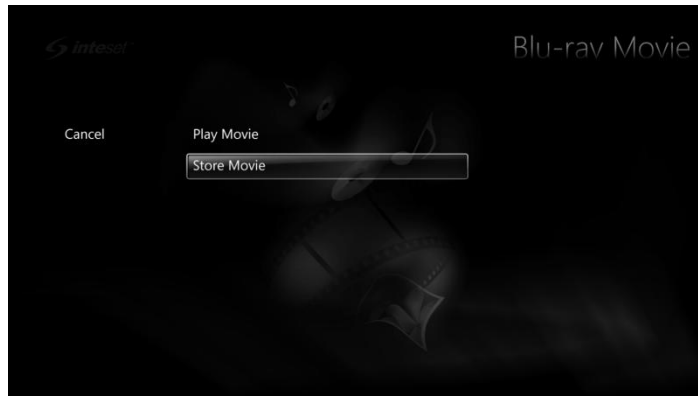
To copy the CD, select the “Rip CD” button on the screen. You will be prompted if you want to continue. Answer “Yes” to the prompt to begin the ripping process. The copy process will store the ripped content in the folder initially selected when choosing the monitored music folders (see “Setting Up Monitored Media Folders” in the previous section).

Importing Movies

Similar to the process of copying music, you can store movie content from DVD and Blu-ray movies to your movie library. DVD movies can take up to 30 minutes to store while Blu-ray movies take up to 90 minutes.

Note: A third-party movie decryption module must be installed and registered in order to store DVD and Blu-ray movies. Contact Inteset or your dealer for more information.

To store a movie, insert the movie disc into the Phoenix optical drive. In a few seconds, the following screen will display.



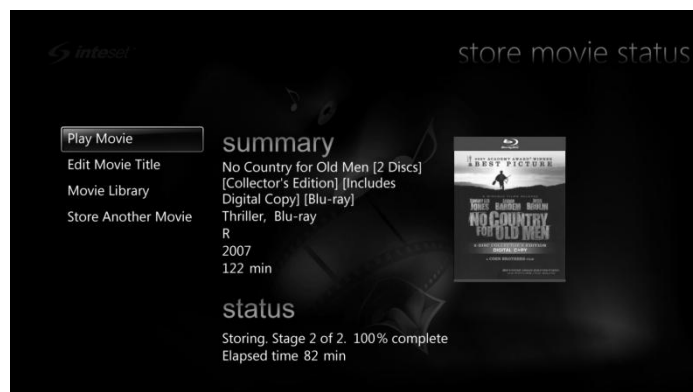
From here, you can choose to play the movie from the optical drive, or store it. Another method to launch the storing process is to select the “store movie” option from the Phoenix main menu Movies menu strip as shown below.



Starting the storing process from this point first requires that the movie disc be inserted into the optical drive. Regardless of the method chosen, the process will begin by introducing you to a similar screen as the one below. Note that it will take a few minutes for the process to initialize and to retrieve the movie cover art and profile information.



Once the process completes, a similar screen will be displayed allowing you to play the movie from the storage location, edit the movie title, go to the Movie Library, or, store another movie.



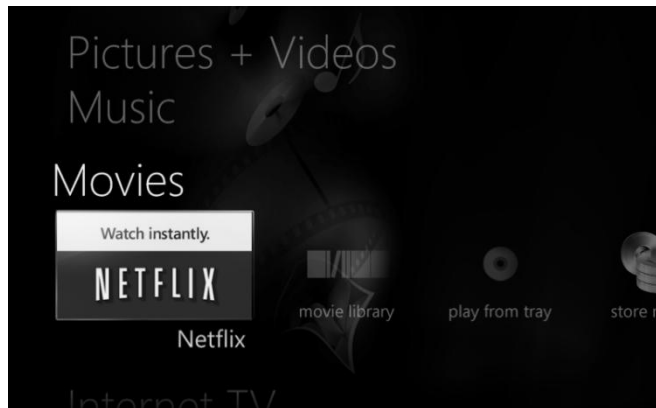
Note that during the movie storing process and after the “Initialization” phase, you will be able to perform other functions on the system such as watching another movie or watching Hulu content, etc. Just press the *Back* button or the *Inteset Logo* button on the remote control to return to the main Phoenix menu. At any time, you can return to the above “Status” screen by selecting the “store movie” option from the main menu Movies menu strip.

Configuring Streaming Service

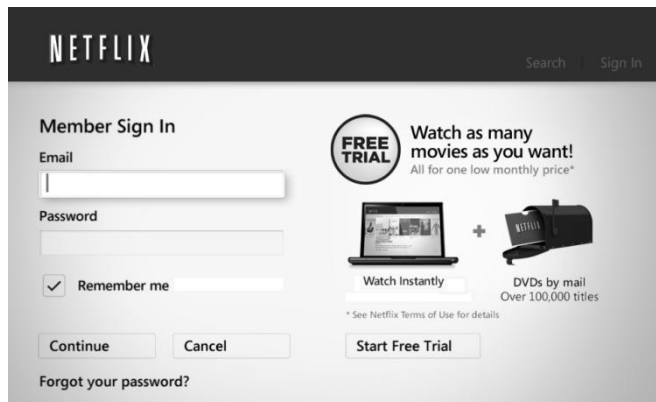
Included with the Phoenix player is the ability to search and watch content from leading, premium streaming service Netflix and Hulu. Before you can enjoy these services, you'll need to go to their respective websites (www.netflix.com and www.hulu.com) and create an account. You will only need to visit the websites once to setup your accounts. Otherwise, all features and viewing can be performed through the Phoenix interface. Visit these sites from any computer to set up the accounts. Both services require monthly services fees to take full viewing advantage, however, each have trial programs so you can test them before fully committing to them. Note that Internet streaming services such as Netflix and Hulu require a broadband Internet connection for best performance and uninterrupted viewing. This is especially the case if there is more than one Phoenix streaming content at the same time.

Signing Into Netflix

Once you have created an account on line, you will be able to sign into Netflix through the Phoenix interface. To access Netflix on the Phoenix, select the Netflix button from the main menu Movie strip as shown below.



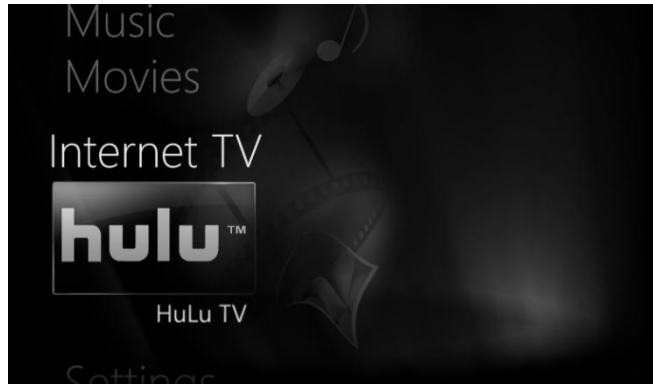
You will be introduced to the following "Sign in" screen where you'll need to enter your Netflix account email address and password.



Press the *Continue* button to proceed to the movie search and viewing features of Netflix.

Signing Into Hulu

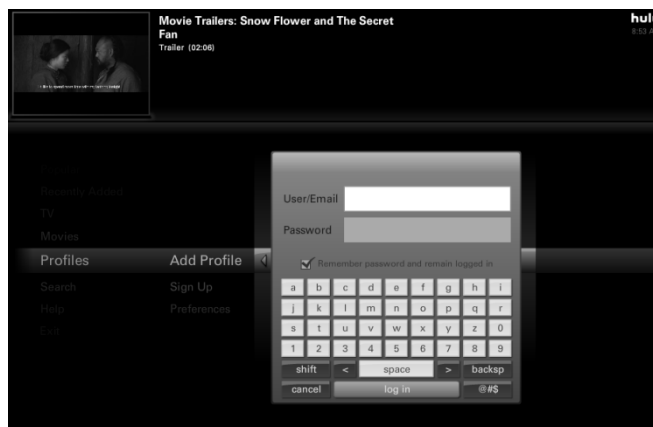
Once you have created a Hulu account on line and signed up to their Plus services, you will be able to access premium content via the Phoenix interface. In order to access the content via the Phoenix, you will first need to log in. From the Phoenix main menu, select the Internet TV strip, then press the Hulu button as shown below.



The introduction screen is displayed as show below providing you with the option to log in. If you do not want to log in or do not have an account, you can select the Start Watching button. Note that you will have limited content to watch if you do not log in with a paid subscription account.



Press the Login option to begin the simple login process. You will be introduced to the screen below. Note that once you log in the first time, you will not need to log in subsequent times you access Hulu. The system will log you in automatically.



With the remote, enter the email address and password you used when creating your Hulu account, then select the "log in" button. From there, you will be shown the Hulu main menu. To learn more about the Hulu interface, such as navigation techniques, choose the Help option in the main menu. To exit Hulu, choose the Exit option in the main menu, or press the Inteset Logo button on the remote.

Chapter 3 – Advanced System Settings

Setup of a Phoenix player is nearly plug-and-play. Very little effort in configuring the system is required beyond attaching a few cables and defining media locations. There are some instances where more configuration is needed. If this is the case, the Advanced Settings option found under the Phoenix main menu Settings menu strip will accommodate the need additional configuration.



In the following sections, you will be introduced to the advanced configuration options available. These include advanced display, audio, system time zone, network, reset media library, system advanced control, firmware update, and remote technical support options. For the most part, making adjustments to these settings should be performed by your Inteset installer or by Inteset technical support staff. The details and use of these options are briefly described in the subsequent sections.

Configuring the Display

Although most display settings and image fine tuning should be done through your display's interface, adjustments can be made directly within the Phoenix as well. If there is a need to make display adjustments using the Phoenix player, from the Settings menu strip, select the "Advanced Settings" option, then press the "Advanced Display Settings" option. The following dialog will be displayed.



Note: One of the advantages of using a DVI or HDMI video connection is that they allow the Phoenix to read the display's native video settings and automatically adjust to them when the system is started. So, it is not recommended to change these settings as they are the preferred settings of the display manufacturer.

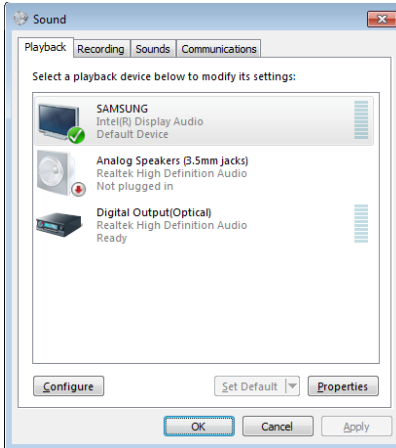
One of the most common adjustments made in this dialog is scaling changes. Horizontal and vertical scaling adjustments can be made to reduce video overscanning issues. Overscanning occurs when the video displayed runs too far beyond the borders of the screen causing truncation of the picture. Reducing the scaling parameters resolves this problem. To make adjustments, using the keyboard touchpad, move the Horizontal and Vertical sliders to the left and press "Apply" to view the changes.

The other popular adjustment is to modify the resolution. By default, the Phoenix will choose the display's native resolution (ie: 1920 x 1080). However, you may want to change this setting to something else. To do so, simply select the desired resolution from those available options in the Resolution dropdown list.

Configuring Audio

The Phoenix player supports direct 8 channel analog out via the 3.5mm audio jacks on the back of the unit. It also supports digital optical S/PDIF and HDMI 1.3 audio output. Regardless of the audio output selected, all methods support the latest audio formats including Dolby Digital TrueHD™ and DTS-HD™ Master Surround.

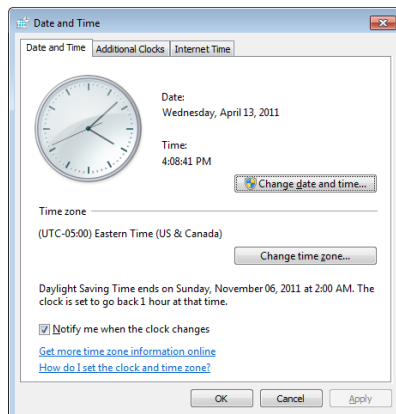
By default, the system is configured to use the HDMI audio device. This can easily be changed by selecting the Advanced Audio Settings option in the Advanced Settings screen. Selecting this option will open the following dialog.



To change the default audio device, using the touch pad on the keyboard, select the device you intend to use, then press the “Set Default” button. You can fine-tune the audio settings by pressing the “Configure” button. This is usually only necessary if the Analog device is use. When complete, return to the Phoenix Advanced Settings screen and save the changes by pressing the “OK” button.

Setting the System Time

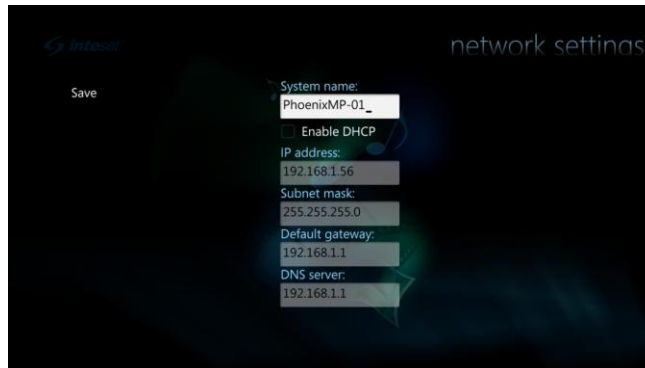
By default, the system time is set to Eastern Standard Time, US & Canada. If you’re located in a different region, you can easily change it by choosing the System Time Settings option in the Advanced Settings screen.



Once selected, the Date and Time dialog will appear. Press the “Change time zone...” or “Change date and time...” button to modify these settings for your region. Press “OK” to apply the new zone and/or time and return to the Advanced Settings screen.

Network Settings

By default, the system network settings use DHCP which means, your router will assign an IP address to the Phoenix automatically. In most cases, the systems network settings do not need to be adjusted. However, if you want to assign a static IP address, or your network does not make use of DHCP, you will need to modify the default settings by accessing the Network Settings option in the Advanced Settings screen.

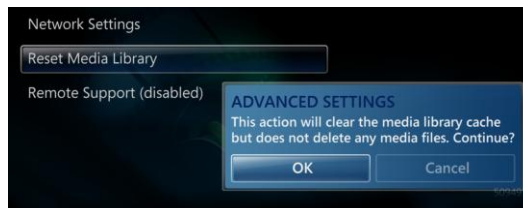


In addition, if you have more than one Phoenix unit in the network, it's good practice to change the system names to something more appropriate so there are no network conflict issues and so they can be identified easily when viewing the Network topology. This can also be accomplished in the Network Settings screen.

Also note that Phoenix media players are set to work on gigabyte networks only. The Phoenix Media player will not connect to a 100mb or less network. This is the case because playback of Blu-ray movies over a network requires high bandwidth. Use of lesser throughput networks can result in jerky playback.

Reset Media Library

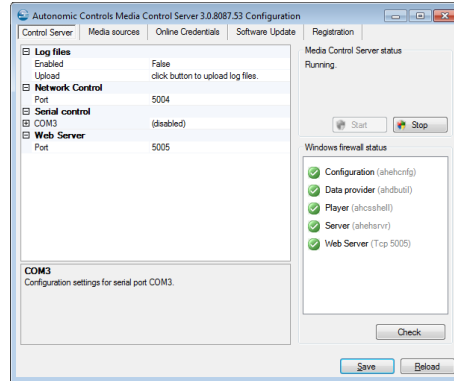
In some circumstances, it may be necessary to reset the media library cache settings to their factory default state. For example, if the system is moved to a new network with different media content or content such as music becomes unsynchronized (references become obsolete). This can happen if media is deleted or moved using a system other than the Phoenix.



Initiating this procedure will not destroy any media library content. It simply removes all references to it. After performing the Reset function, you will need to reassign media library locations (see the "Setting Up Monitored Media Folders" in the "Configuring the User Interface" section above). Note that depending on the amount of content, it may take several minutes for the system to re-synchronize with the content. During this process, system performance will be degraded and some content will not be available to play until the process is complete.

Advanced Control Configuration

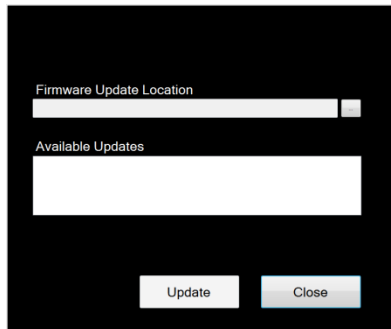
If you own an advanced control system such as AMX, Crestron, or RTI, you can use those systems to control your Phoenix Media Player. To access the configuration utility for advanced control, choose the "Advanced Control Configuration" option in the Advanced Settings screen.



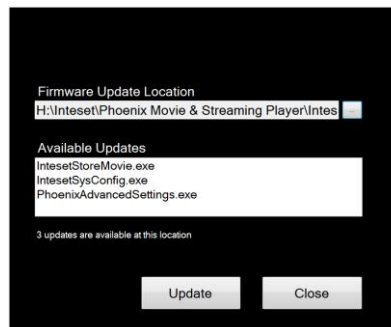
The advanced control service is provided by Autonomic Controls. Licensing, user instruction, and support related to the use of this utility are also provided by Autonomic Controls. Please visit <http://www.autonomic-controls.com> for further information.

System Firmware Update Tool

On occasion, it may be necessary to update certain modules on the system. Or, Inteset may have new features to add to the system. To update these components, the Phoenix Media Player is equipped with a handy firmware update tool. To access the utility, press the “System Firmware Update Tool” button found within the Advanced Settings screen. The dialog below will appear.



From a computer on your network, check Inteset’s website support page to download the latest Inteset updates and new modules. Place the downloaded files in a shared folder on your network that is accessible to all systems. If you have an Inteset TeraRAID storage system, place the files in a folder at that location.



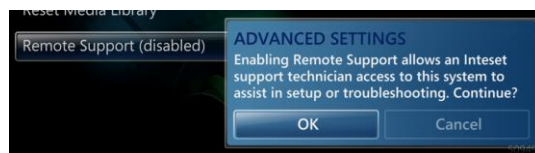
Within the Phoenix firmware update tool, press the ellipse button to the select the “Firmware Update Location” where you placed the downloaded files on the network. The list of files

approved files will be displayed. Next, select the file name you wish to update, then press the “Update” button. The system will launch the install process for that particular module. Follow the instructions on the screen to complete the install. Repeat these steps for subsequent modules you wish to install.

Note that only Inteset provided and approved modules can be applied to the Phoenix Media Player.

Remote Support

In the event an Inteset support technician is needed, enable the Remote Support option found in the Advanced Settings screen. By enabling the Remote Support option, an Inteset technician can remotely access your Phoenix Media Player if it is connected to the Internet. This can be useful if assistance in setup or troubleshooting is needed.



This feature is typically used by your Phoenix installer if necessary. For more information regarding Inteset Support, refer to Inteset’s website support page.